



The quarterly
newsletter
of Sparks Reed
Architecture
and Interiors
of Tulsa

Temporary office:
1401 S. Denver Ave.
Tulsa, OK 74119

918.884.6007 (office)
877.276.1242 (fax)

Fall 2017
Vol. 1, No. 2



Check it Out!

Surviving
the tornado!
Page 3

Sappington brings
3D imaging,
modeling
experience to SR,
Page 5

Jun Kang
Robinson lends
far eastern
perspective to
Sparks Reed
Page 5

Chambers boosts
SR's interior
design team,
Page 6

Sparks Reed
helps an
Oklahoma icon
refine its image,
Page 7



Building a solid
foundation,
Page 9

A wild and crazy summer!

It has been one wild and crazy summer – a historic one for Sparks Reed. Our firm doubled in size, and we were entrusted with several outstanding projects for our amazing clients.

This summer also brought some surprises.

We woke up the morning of Sunday, Aug. 6, to hear a tornado had struck our office in the middle of the night. As the day progressed, we saw the physical damage to our building and several others in that central Tulsa area. By noon they had our office tower quarantined, blocking all tenants from the site. Fortunately, our IT guy had insisted on having a duplicate server offsite in Dallas, so we didn't lose our electronic data or drawing files. That turned out to be a tremendous blessing, one of several that sustained us through this tragic event.

Most important, which I cannot stress enough, is how that tornado hit at a time when our building was empty, as were most others in its path. Every one of our team members and their families were safe. That was blessing number one.

Then there was the outpouring of support from our friends, clients, and even our competitors. Those were so touching and inspiring, it was hard to feel sorry or upset by the tornado.

That points to the real story here: the support and generosity of those that reached out to us. I want to thank all of the people that offered us office space within 12 hours of the news. By Monday morning we had received seven offers from different architecture firms, contractors, and clients to let us move in immediately. We chose CJC Architects, who we have competed with in the past.



David Reed

CJC's team was so wonderful in welcoming us into their office, a great building they designed and built. CJC opened their doors to us early Monday morning, and they provided workstations for our entire staff. I have never appreciated things like chairs and desks as much as I did then. By that afternoon we had moved our backup server into their office and were back in form.

The blessings continued from there, for while recovering from this disaster,

our team was able to keep our promises to our clients. We issued a new baseball stadium for Putnam City West High School, and a new basketball arena for Tulsa Public Schools McLain High School.

To focus on the positive, that wraps up everything we drew from this: we are blessed with great people and great projects for a great group of clients.

I would like to thank our newest team members, assuring them that this is not a typical summer. I look forward to many more peaceful summers with our team. I would also like to thank our summer intern architects Eric King, Hope Baily, and Katrina Klempa. You "Pokes" did an outstanding job, and we wish our future architects the very best as you get back into the School of Architecture, or as we lovingly call it, the School of "Architorture," when you don't sleep for days on end.

David Reed is a principal and co-founder of Sparks Reed Architecture and Interiors.

Surviving the tornado!

Sparks Reed Architecture and Interiors of Tulsa moved into temporarily offices following Tulsa’s surprise August tornado. “We are back up and running,” said Sparks Reed Principal and co-founder David Reed. “CJC Architects was graciously able to supply us

workspace for all of our employees.” Sparks Reed lost access to its Remington Tower home on the morning of Aug. 6 after a tornado severely damaged that 5810 E. Skelly Dr. building. No employees were on site when the storm struck, and no one was injured. The 18-story tower remains closed as officials evaluate various safety issues. “We are completely shut out of our home office and shall not have access to that office for an undetermined amount of time, according to Remington Tower officials,” said Reed. Reed learned of the damage at 8 a.m. that Sunday. By the end of that day, his 11-employee architectural and interior design firm retrieved all of its data from a remote server while CJC President Tim Boeckman arranged for Sparks Reed to share his firm’s 1401 S. Denver Ave. office. Dallas contractor Brad Diggs restored Sparks Reed’s servers the next day, allowing the architectural firm to resume operations Tuesday. “We worked all through Sunday night and Monday morning, moving stuff into CJC’s office and setting up our network,” said Reed, who praised the efforts of Boeckman, CJC, Diggs, and his Sparks Reed staff. “I really want to thank (CJC) for their hospitality, letting us move into their office with them. They were super helpful in getting our network put together, providing office furniture, and a roof over our heads.” Reed said it remains too early to consider whether Sparks Reed will be able to return to Remington Tower or must find a new home. The firm remains focused now on meeting the needs its clients. “We have a lot of deadlines coming up here in the next four weeks,” he said. “Right now we’re just focused on meeting our commitments.” “Our thoughts and prayers are for all the tenants and the owners of Remington Tower,” said Reed. “I pray they all recover from this and our businesses get stronger moving forward. I know everybody at Remington Tower is working hard to try and help tenants get back into the building. The only thing we can’t replace is time and people. Thankfully our people are safe. Our time is compromised some, but we are working to recover that.”

Remington Tower, following the tornado

Sparks Reed moves to temporary office following August storm



Sparks Reed Architecture and Interiors of Tulsa has established a temporary office at 1401 S. Denver Ave., the home of CJC Architects

All aboard!

Sappington brings 3D imaging, modeling experience

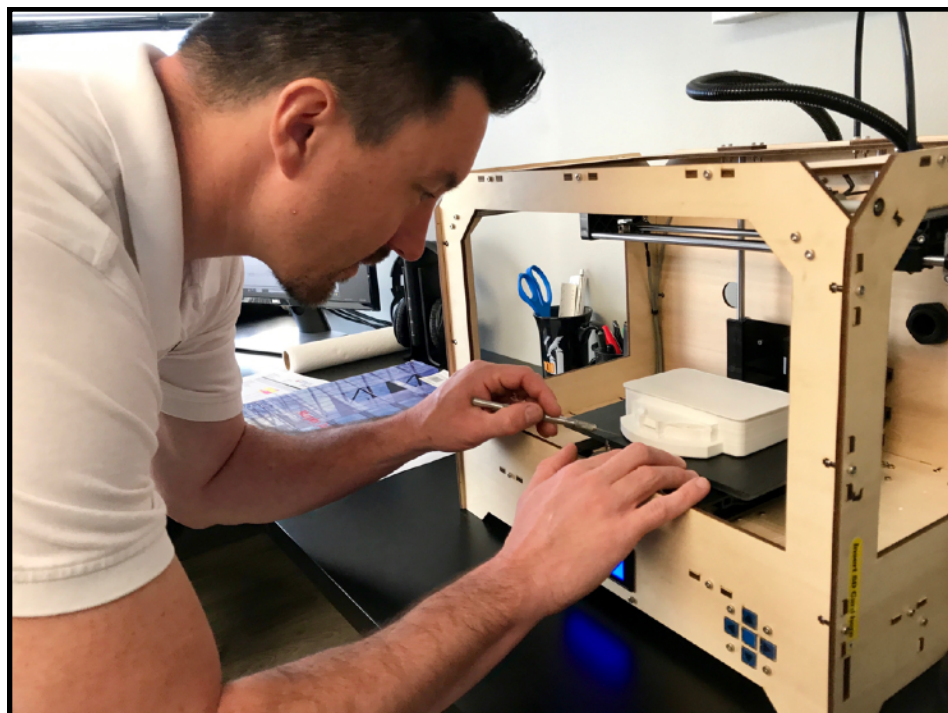
Tulsa architect Tyler Sappington, a 33-year-old graduate from Oklahoma State University, became Sparks Reed's third hire of 2017, said Sparks Reed principal and co-founder David Reed.

"Tyler is a great addition to our team of architects," said Reed. "We are very excited about the future of Sparks Reed as we continue to grow both our architecture and interiors resources."

Sappington brings to Sparks Reed an in-depth knowledge of three-dimensional printing and milling, a skill he also shares with Tulsa's Fab Lab as an advisory committee member and volunteer. Developments in this emerging field fuel his bullish outlook on the industry's future.

"With all the advancements in technology, there are great things on the horizon not just from a computer drawing and modeling standpoint, but also in construction," said Sappington. "I'm really excited about the new materials coming out, and what can be done there. VR (virtual reality) also has a lot of potential from a project delivery standpoint."

See SAPPINGTON, page 8

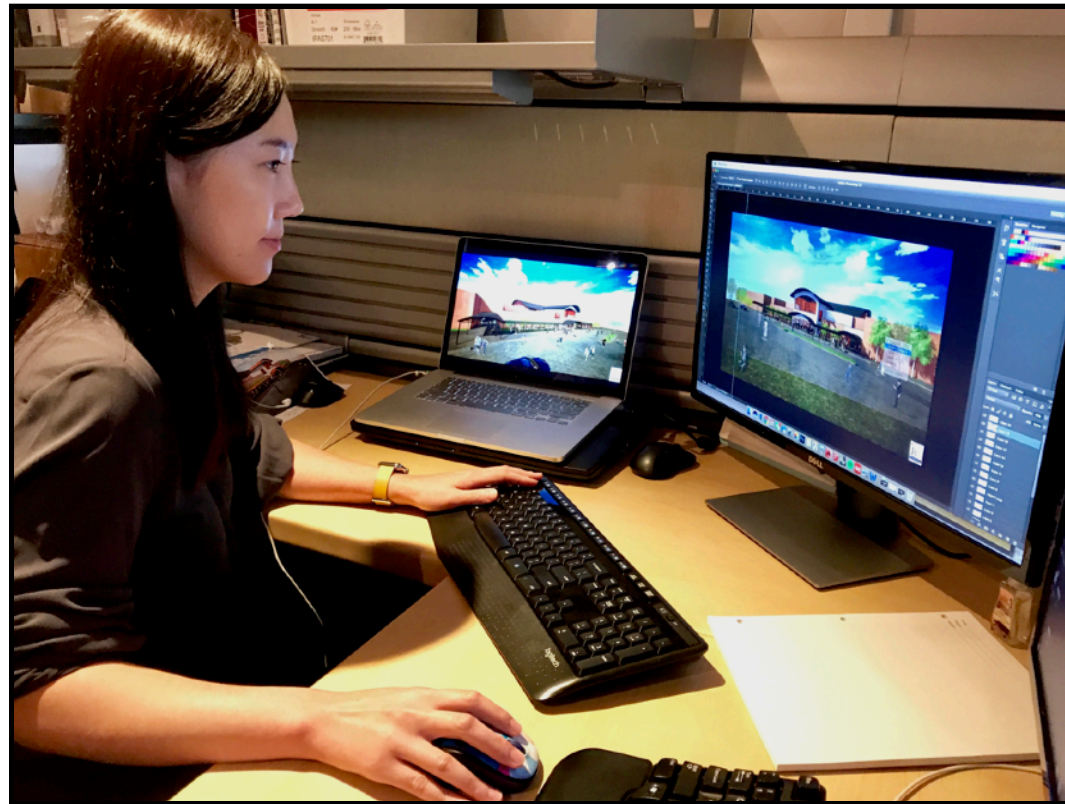


Tyler Sappington
at work on a 3D
printer.



Tyler Sappington

New employees enhance Sparks Reed's capabilities, performance



Jun Kang
Robinson
at work in
Spark
Reed's
temporary
office.

Jun Kang Robinson lends far eastern perspective to Sparks Reed

Intern architect Jun Kang Robinson, a native to Qingdao, China, brings a strong international design perspective to Sparks Reed Architecture and Interiors.

"We're super excited to add Jun to our team," said Sparks Reed Principal and co-founder David Reed. "She comes with outstanding references and a very impressive portfolio."

Robinson, 27, received her masters degree in architecture from the University of Florida in May. She earned her bachelors from the Qingdao Technological University in China.

That education mix helped Robinson develop skills in both computer-aided design and old-fashioned hand drawing.

"In China, we'd do a lot of digital and a lot of modeling," she said. "Since I went to the University of

Florida, they do a lot of hand drawing. So it was kind of the reverse of what you'd expect, and it helped me learn both skills."

Robinson appreciates the artistic approach hand drawing lends her work. She likes to start projects that way, then digitize those elements and finish the project electronically.

"I really appreciate that ability to do that," she said. "This has given me a lot of experience towards becoming a good architect."

Sparks Reed's investments in virtual reality, 3D modeling, and other advanced systems parallel Robinson's ambitions.

"They want to increase their efforts with new systems and use it to develop more interesting projects," said Robinson. "That attracted me. It made me want to come to this firm."

See ROBINSON, page 8

Chambers boosts interior design team

Sparks Reed Architecture and Interiors has hired Interior Designer Emily Chambers.

"We couldn't be happier to have Emily on board," said Sparks Reed co-founder and lead interior designer Jill Selman. "She is professional and teachable, while teaching us a few things too, such as a design tool she found while at school. She is a calm, focused presence with a good eye for design."

Chambers, 32, recently graduated from Tulsa Community College's three-year design program. She will pursue her National Council for Interior Design certification while tackling Sparks Reed's commercial projects.

"I feel very lucky to be hired by this company," said Chambers. "I've always been a hard worker, but just in more physical jobs, so it's nice to be able to apply the same work ethic on projects that are maybe not so physical."

Chambers, who has three children with her husband Jerry, brings a long-nurtured interest to her work.

"My husband and I have remodeled two houses now," she said. "I just have a passion for it. I have always enjoyed hand drafting. My dad was a carpenter and he taught me to sketch door swings and details like that."

It thrills her to apply those skills through Sparks Reed's growing software packages.

"It just takes our work to a whole new level," Chambers said. "It lets the clients see the finishes almost in reality."



Emily Childers

Creating a new standard

Sparks Reed helps an Oklahoma icon refine its image

Solid industrial metals, bold orange furnishings, sleek modern finishes, cutting-edge technical services, all warmed by nature’s light.

For more than six decades, Charles Machine Works Inc. has brought those vibrant elements to construction sites around the world through its renowned Ditch Witch brand of trenchers, directional drills, and other innovative devices.

These same elements now brighten the company’s Perry, OK., headquarters through a sweeping renovation by Sparks Reed Architecture and Interiors. That Tulsa firm also crafted a new design standard for Ditch Witch’s worldwide dealership network.

Looking Back
at favorite projects

“It creates a structural identity Ditch Witch did not have before,” said Sparks Reed co-founder and lead interior designer Jill Selman. “We wanted to show the industrial side of who they are. We

translated that into finishes and materials, mixing metal and steel with more modern color schemes.”

That proved a radical transformation for an office clinging to its original 1960s interior.

“Everything was changed, from the lighting to the custom tables to the graphics on the walls,” Selman said. “We were very intentional about lining those things up with the image of what Ditch Witch is.”

The makeover started with a contract to develop new interior graphics for the offices of Charles Machine Works, parent of Ditch Witch. As Sparks Reed designers became more involved, the Perry company expanded its efforts to a general remodel of its conference room. Rising enthusiasm for Sparks Reed’s work led Ditch Witch to upgrade more and more of that workspace, until the entire front office glistened from Sparks Reed’s designs, implemented by Stillwater, OK, general contractor Lambert Construction.

“It turned into a really nice three-year relationship,” said Sparks Reed co-founder and principal David Reed.

See **LOOKING BACK**, page 8



Two images from the finished work



Looking Back Continued from page 7

This transformation completely changed visitor perceptions. Sparks Reed added a welcoming awning to the building’s previously nondescript entryway, with bold letters proclaiming the Ditch Witch brand for the first time. CMW’s industrial roots shine through a concrete reception desk stamped with the company name, and newly exposed steel supports that open up the office’s once-closed ceiling spaces. Sparks Reed replaced the front lobby wall with broad glass panels that cast natural light across shiny new floors and glossy modern finishes. An LED light system adds to the office’s new array of efficient, contemporary furniture and fixtures, many cast in Ditch Witch’s classic orange color scheme. Decorations celebrating past company successes completed the renovation.

“We really designed that lobby to be a museum,” said Reed. “It tells the history of Charles Machine Works, with a world map on the wall that shows where Ditch Witch is across the globe.”

These touches continued into the conference room, training room, and adjoined offices. Even the company store received a makeover, rising out of the basement to become a new showpiece proudly displaying the Ditch Witch name upon company shirts, hats, and other paraphernalia.

“I hope it had a big impact on sales,” Reed said with a smile.

Charles Machine Works officials so appreciated this work, they asked Sparks Reed to craft a matching design standard for future Ditch Witch dealerships. The private company also hired the Tulsa firm to redesign the headquarters entryway and lobby for subsidiary Subsite.

The end result provided the Perry firm with a more efficient office, updated with the latest technical systems, in an environment that daily affirms the success Ditch Witch enjoys in the worldwide construction sector.

“It was just a wonderful transformation,” said Selman.

Robinson Continued from page 6

Her husband, Matthew Howell Robinson, also encouraged her to join the Sparks Reed staff. As an Oklahoma State University graduate, the Tulsa Public Schools teacher knew of this Tulsa firm and two of its co-founders, Gary Sparks and David Reed, through their work on Boone Pickens Stadium and Gallagher-Iba Arena.

“They’re like giants in the field,” said Jun Robinson. “So I knew I wanted to work here. This is very important to me. This is the opportunity my father wanted me to have.”

Growing up during one of China’s strongest construction periods, with an architect as a father, helped nurture Robinson’s ambition. Her budding specialties include shopping malls, indoor environments, and Asian designs.

“When I grew up, I always saw my dad drawing at the drawing board at home, and then he began to use auto CAD,” said Robinson. “I am glad to be able to work at a firm where I can have an opportunity to use these advanced systems myself.”

“I wanted to go overseas to learn,” she explained. “He supported me in this. He knows American architects are very advanced in comparison to Chinese right now, so he really encouraged me to do it that way. So this gives me a very good push in my career.”



Jun Kang Robinson

Sappington Continued from page 5

A Tulsa native and Holland Hall graduate, Sappington worked at two other Tulsa architectural firms before coming to Sparks Reed. He and wife Emily have been married three years.

“I like building stuff,” he said. “We have an old Tudor-style house that I like to work on. I also work on model building in my spare time. I work on CNC monograms on the side.”

A Solid Foundation

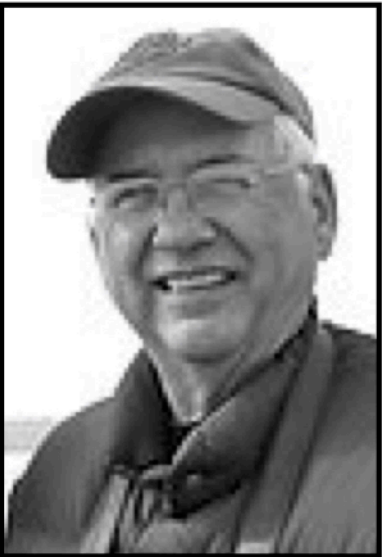


The **Wesley Foundation** at Oklahoma State University will employ a new platform for its growing ministry once **Joe D. Hall Construction** of Elk City finishes work on this 31,000-square-foot design by Gary Sparks of **Sparks Reed Architecture and Interiors** of Tulsa. This three-story building in the heart of OSU's Stillwater campus will feature not only worship venues and study resources, but a coffee shop gathering place, student living quarters, and other hospitality services. Rev. Michael Bartley, pastor of that campus vanguard unit, sees this construction project as the culmination of his work there, and the fulfillment of the staff's five-pillared mission. Sparks said the building should be complete by August 2018. For more details, check out SparksReed.com or WesleyOSU.com

INSIGHT

"Having spent 45 years in this profession, it is very difficult to single out one accomplishment to talk about. I can think of many and I am very proud of the opportunities I've had to work on some great projects with great people. All projects involve numerous people with different talents, skills, and knowledge to make up a team that ultimately produces a successful project."

— Gary Sparks, co-founder of Sparks Reed Architecture and Interiors



Welcome
to our quarterly
newsletter!
Please let us know what
you think!
Have a
wonderful day!



Temporary home:
1401 S. Denver Ave.
Tulsa, OK 74119

918.884.6007 (office)
877.276.1242 (fax)

To: